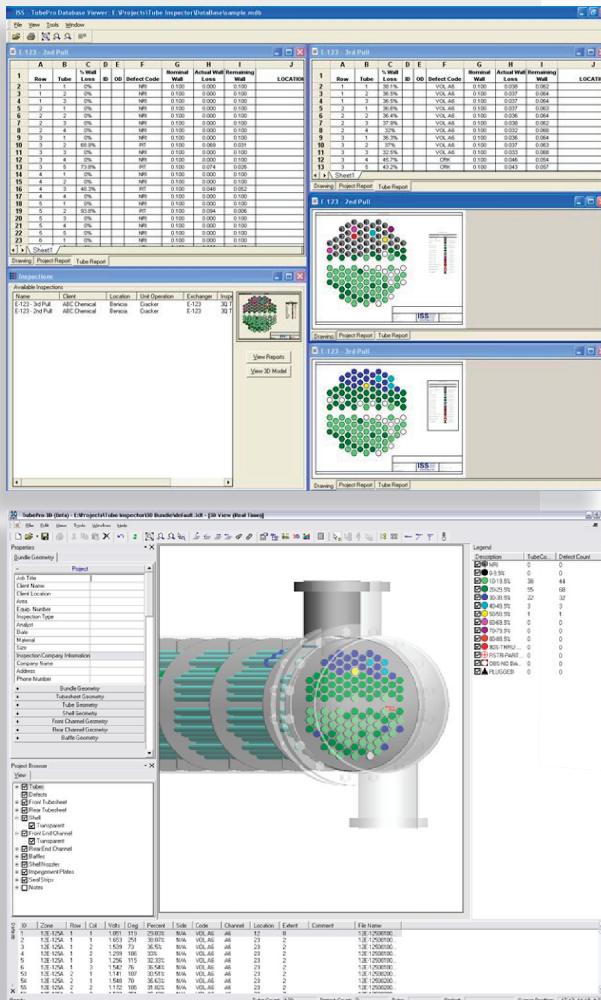


# TubePro™ by ISS

## Top-Shelf Tube Mapping Software



**ISS** Inspection  
Software  
Systems



## KEY FEATURES & BENEFITS

- Fully Customizable Drawings and Reports
- Fast Tube Map Creation
- 3D Modeling and Visualization
- Acquisition Data Import from Magnifi®
- Free 2D Drawings and Report Viewers
- User-friendly Interface

TubePro™ is the leading software for heat exchanger tube mapping, inspection, testing, data management and reporting in the NDT industry. Based on more than 30 years of experience, TubePro is the best tube-mapping tool for the oil & gas and power generation industries.

### Magnifi®-compatible

TubePro is the ultimate reporting tool to be used alongside Magnifi for air-coolers, boilers, condensers and shell & tube heat exchangers. It allows for rapid tube map creation and advanced reporting with acquisition data imported directly from Eddyfi's software. TubePro provides complete data

visualization, and takes full advantage of Magnifi's landmark detection feature to accurately position inspection results. By doing so, flaws are precisely located within the heat exchanger even if encoding devices are not used.

### Powerful 3D

TubePro also offers impressive, built-in 3D capabilities: modeling and visualization of complete bundles and defects in 3 dimensions are easily generated from a single click. Furthermore, version 4 now supports multiple drawings, corrosion projections, multiple inspection reports, 3D hairpin, multiple connected U-Tube sections and more.

### Fully Customizable and User-Friendly

TubePro has an extensive set of tube mapping editing tools that are easy to learn. Adding, deleting, and editing tubes is very fast and the use of familiar features, such as "undo", makes the whole process stress-free for all users. One of the many unique features of TubePro is the ability to automatically create complex shell and tube heat exchanger layouts by specifying very few parameters. Virtually any existing layout can be duplicated this way. In addition, TubePro can read existing maps from PDF, WMF, and DXF files, considerably reducing map preparation time.

TubePro was developed with a focus on ease-of-use in order to speed up the inspection and reporting process. The use of fully customizable templates (drawings, legends, and reports) provides rapid reporting that is consistent throughout your

organization. Once a template is edited and customized, it is easily saved for future work.

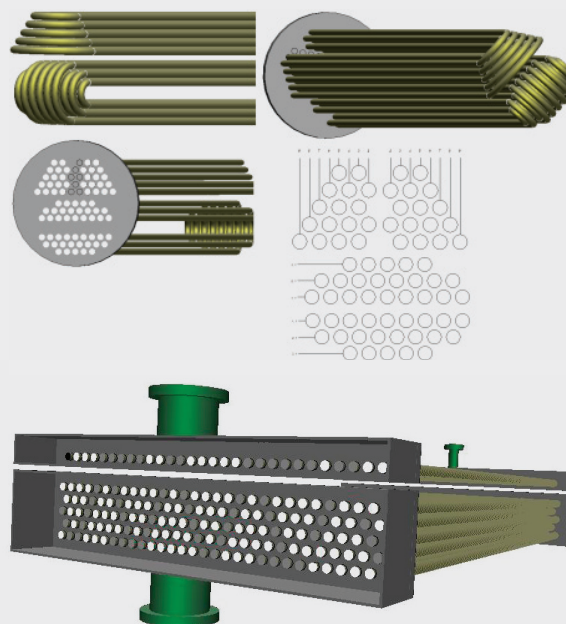
### World-Class Reporting

TubePro uses a reporting system compatible with Excel and Word that allows reuse of existing reports. The software also takes advantage of features such as formulas and macros. TubePro's user interface is dynamic, and reports can easily be translated into any language.

TubePro is simply the ideal tool for data management and reporting, in-line with your company's standards and your customers' requirements. Coupled with Magnifi, it creates the most elaborate software package for air-cooler, boiler, condenser and heat exchanger tubing inspections.

## Specifications

OPERATION MODES	Database Viewer
	Inspection Editor
	2D/3D Viewer
	Reporting
DATA VISUALIZATION	2D Tube Mapping
	Drawings View
	3D Bundle Visualization
DATA ACQUISITION / COMPATIBILITY	Import from Magnifi®
	Import from a variety of other inspection software
	Manual defect data entering and editing, if needed
REPORTING	Fully customizable
	Import from Microsoft® Excel™ and Word™
	Works with Microsoft Excel™ formulas
	Automatic report update
	Reusable templates
OPERATING SYSTEMS	Windows® XP
	Windows® 7 (32 bits)



## Ordering info

SFW-TUBEPRO-4.0-2D

SFW-TUBEPRO-4.0-2D&3D



2800 Louis-Lumière St., Suite 100  
Québec, Québec G1P 0A4 CANADA

[info@eddyfi.com](mailto:info@eddyfi.com)  
[eddyfi.com](http://eddyfi.com)

**Eddyfi is the newest and most dynamic company in the field of non-destructive testing (NDT) equipment.** It employs the world's most renowned experts in the field of advanced eddy current testing. Eddyfi focuses on providing complete high-end solutions for the inspection of critical components in several major industries including nuclear, power generation, oil and gas, and aerospace. The company develops the industry's best performing and most reliable test instruments, scanners, surface and tube probes, and acquisition and analysis software. Eddyfi has the expertise, engineering, and manufacturing flexibility to supply fully-integrated and specially-made solutions that make customers safer, more efficient and more profitable.

© Eddyfi NDT, Inc., 2013. Eddyfi, Ectane, Delfi and Magnifi, along with the associated logos, are trademarks or registered trademarks of Eddyfi NDT, Inc. You must obtain written consent from Eddyfi before using any of these marks. Other trade names and trademarks present appear with the permission of their respective owners, or appear under principles of "fair use" or "nominal use". Unless otherwise noted, by using a third party's trademark or trade name, we do not intend to suggest any affiliation with, or endorsement of such third party or its products or services, and we hereby expressly disclaim any such affiliation or endorsement. Eddyfi reserves the right to change, without notice, product offerings or specifications. Printed in Canada. 06/2013.